

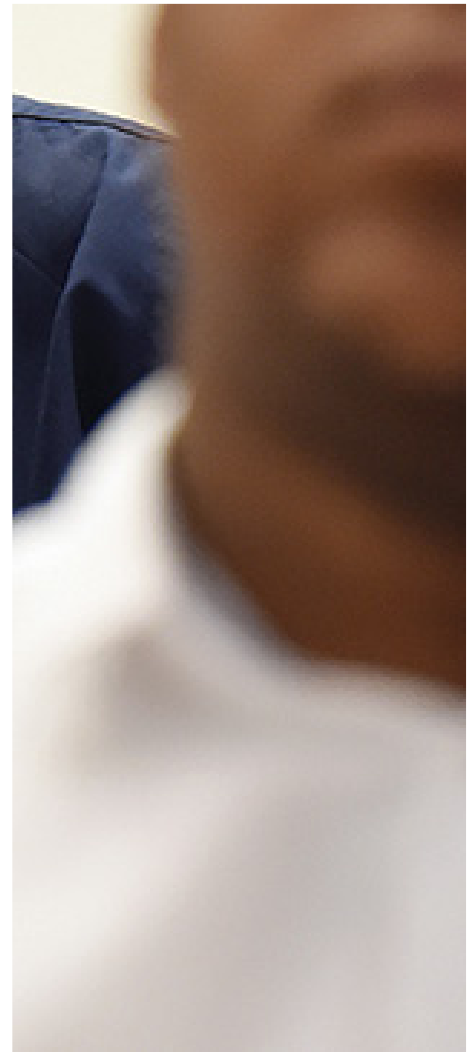
EXECUTIVE EDUCATION > LEADERSHIP & MANAGEMENT EXCELLENCE



# The Next Manager

---

An interactive and practical programme which aims to prepare individuals for future management positions.



**2 - 4 July 2019**

ALSO AVAILABLE AS AN IN-HOUSE PROGRAMME

**Gordon Institute  
of Business Science**  
University of Pretoria

This programme will expose you to tools to **build your influence from where you are, not based on your position, but based on finding your voice.** We will examine the various factors that cause some to accelerate and the things that cause others to stagnate. The programme aims to enlarge participants' social intelligence resulting in an increased ability to deal with the demands of being a first line manager.

## Course info

**FACULTY** > **Paul Nyamuda** is an organisational psychologist and an international speaker who inspires leaders across the globe and challenges how they think, as they shape their organisations for the future.

When he is not speaking, Paul draws wisdom from 20 years of EQ research, business and non-profit experience, to coach executives on daily leadership challenges, providing practical solutions for both teams and individuals. To date, Paul has authored 30 books on leadership, emotional intelligence, personal mastery and marriage.

As an expert in leadership and emotional intelligence, his passion lies in unlocking the greatness of individuals, teams and world-class organisations.

**FEE** > R15 400 (includes tuition, instruction material, lunches and refreshments and is VAT exempt).

**DURATION** > Three days

**DATES** > 2 – 4 July 2019

### Key focus areas:

- > Building your personal brand based on feedback;
- > 20 keys to climbing the corporate ladder the right way; and
- > Keys to leading from the middle.

### Who should attend?

Those who are aspiring to take on a management position in the near future and require the necessary skills to prepare for a first line management position.

## Benefits of improving your management and leadership acumen:

Understand the power of perception and its impact on your emotions and behaviour.

Deepen your understanding of different management styles and its impact on self and others.

Increase leadership capabilities through a deepened understanding of leadership styles and its impact on others.

Understand personal strengths, weaknesses, blind spots and personal communication preferences.

Build leadership presence by strategically building your leadership brand and management philosophy.

Design strategies for improved relationships & effectiveness within your team and organisation.

Agree on priority development areas to leverage further success.

Develop a framework and common language on which to base all interactions.

Adapt & connect with others to enable effective communication.

Develop skills in upward influence and dealing with senior stakeholders.

### How you will benefit:

At the end of the programme, you will be able to:

- > Increase your self-awareness by benchmarking yourself against the things successful people do;
- > Have a higher degree of assertiveness as a result of finding your authentic voice;
- > Be more goal orientated;
- > Have greater levels of resilience;
- > Manage your time and energy better;
- > Walk away with a practical toolkit for managerial and personal success;
- > Start producing results consistently in alignment with your values and goals;
- > Learn principles of professionalism seen in higher quality of work and interactions with all stakeholders; and
- > Grow in emotional and social intelligence.



For enquiries call **+27 (0)11 771 4302** or email **hlapolosat@gibs.co.za**

This programme can also be offered in-house for your organisation. Enquire about our Study & Stay packages at our on-site illovo Hotel.

