

Cost of the Programme

A scholarship will be provided to selected candidates by Goldman Sachs and the Goldman Sachs Foundation. However, candidates will have to submit a fee of R3, 000 upon confirmation which will be refunded after graduation. If a participant leaves the programme for any reason or fails to attend at least 90% of the academic sessions, this fee will be forfeited. Participants will be responsible for their own transport costs to and from the GIBS campus for the academic programme and all networking events.

Programme Venue and Tentative Dates

GIBS Inner City Campus, Pritchard St, Johannesburg
March – July 2012

Application Details

Complete and submit the programme application form which is available:

1. On the website www.gibs.co.za
2. At the GIBS campus (address below)
3. On request by calling Ms. Misha Dhana on either of the numbers below
4. At The Business Place centres listed below

Contact

Programme Coordinator
Goldman Sachs-GIBS *10,000 Women* Certificate Programme for Women Entrepreneurs
Gordon Institute of Business Science,
26 Melville Rd, Illovo, Johannesburg
T (011) 771 4000 (switchboard)
T (011) 771 4260 (direct)
F 086 298 6217
E dhanad@gibs.co.za

The Business Place

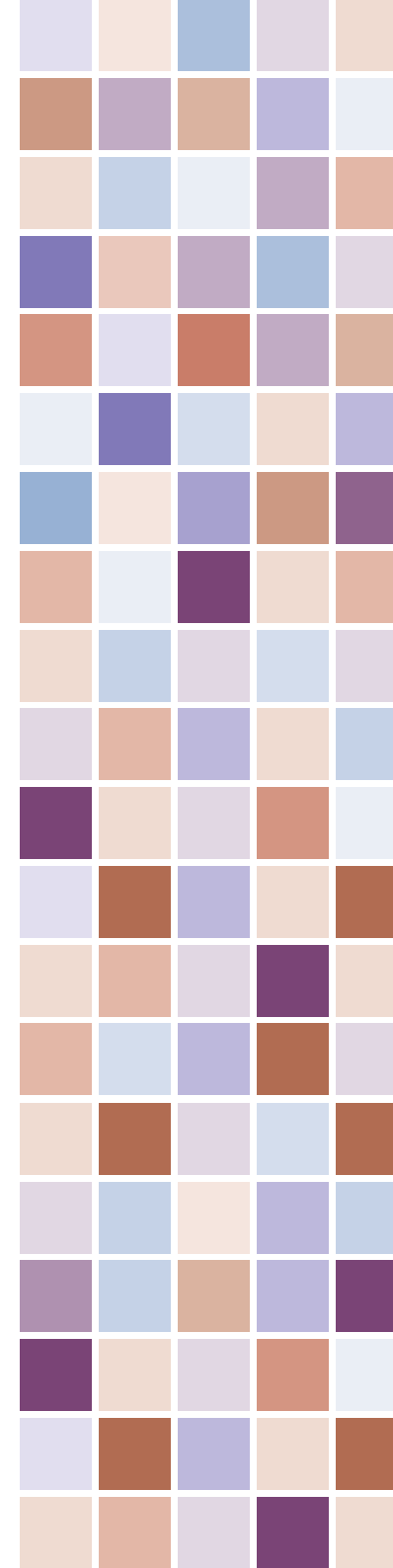
ALEXANDRA: Tel: (011) 882 3306/19 Fax: (011) 264 0492
Address: Alexsan Kopano Centre Cnr 12th Avenue & Selbourne Alexandra
KLIPTOWN, SOWETO: Tel: (011) 945 2101 Fax: (011) 945 3178
Address: Northern Structure Walter Sisulu Square cnr Klipspruit Valley Rd & Square Rd, Soweto
JOHANNESBURG CENTRAL: Tel: (011) 836 9000 Fax: (011) 836 9014
Address: Ground & First Floor 58 Marshall Street Between Sauer & Ferreira Johannesburg



Goldman Sachs-GIBS
10,000 Women
Certificate Programme
For Women Entrepreneurs



GORDON INSTITUTE
OF BUSINESS SCIENCE
University of Pretoria



Introduction to *10,000 Women*

10,000 Women is a five-year investment by Goldman Sachs to provide 10,000 underserved women around the world with a business and management education. In South Africa, *10,000 Women* is managed and delivered by the Gordon Institute of Business Science (GIBS), the business school of the University of Pretoria.

About the Gordon Institute of Business Science

GIBS is a leading South African business school. According to the top business school ranking measure, the *Financial Times of London Business School Annual Ranking*, GIBS was ranked 38th in the world for delivering executive education. This makes GIBS the top ranked business school in Africa. GIBS is proud to deliver management education to over 80 corporate and public organizations and is currently the only institution in South Africa that offers an MBA in entrepreneurship.

Programme Outline

The Goldman Sachs-GIBS *10,000 Women* Certificate Programme for Women Entrepreneurs provides targeted support to growing small businesses including business and management training delivered by leading faculty and industry specialists, mentoring, business advisory and access to networking opportunities.

Key components of the programme include:

Academic Programme	16 days spread over 4 months
Mentorship	6 months
Community-based Women Entrepreneur Dialogues	6 months
Networking Events	Ongoing

The programme is structured in a practical, interactive way to enable participants to apply what they learn in the classroom to their businesses.

At the end of the programme, participants will be able to:

- Build a robust business by refining business models and strategies
- Form and implement growth strategies
- Gear up to meet the challenges of growing competition

Academic Programme Content

- Entrepreneurship
- Business Strategy
- Financial Management; Basics of Accounting
- People Management
- Marketing Management
- Operations and Supply chain management
- Technology and Computer skills
- Networking
- Negotiation
- Leadership skills



Programme Highlights

- 4 months of academic training by top GIBS faculty and external experts using practical exercises, case studies, and customized resources
- Interactive workshops with sector experts on complementary topics
- Development of a comprehensive business plan
- Engagement with other women entrepreneurs owning businesses of a similar size
- Field trip to successful enterprises in Gauteng
- Post-programme follow up including business advisory and mentorship support for six months
- Networking events with businesspeople, government, finance providers, and other relevant stakeholders
- Participation in dialogues with other women entrepreneurs in the programme

Selection Criteria

- Women entrepreneurs who manage their own businesses in South Africa
- Minimum of a matric qualification
- Good understanding of English
- Business to have an annual turnover of R300,000 to R5million
- Business must be in operation for over a year
- Businesses that employ five or more people will be given preference
- Entrepreneur must be prepared to comply with the measurement requirements of the programme

Selection Process

Application form screening will be followed by a selection panel interview for shortlisted candidates